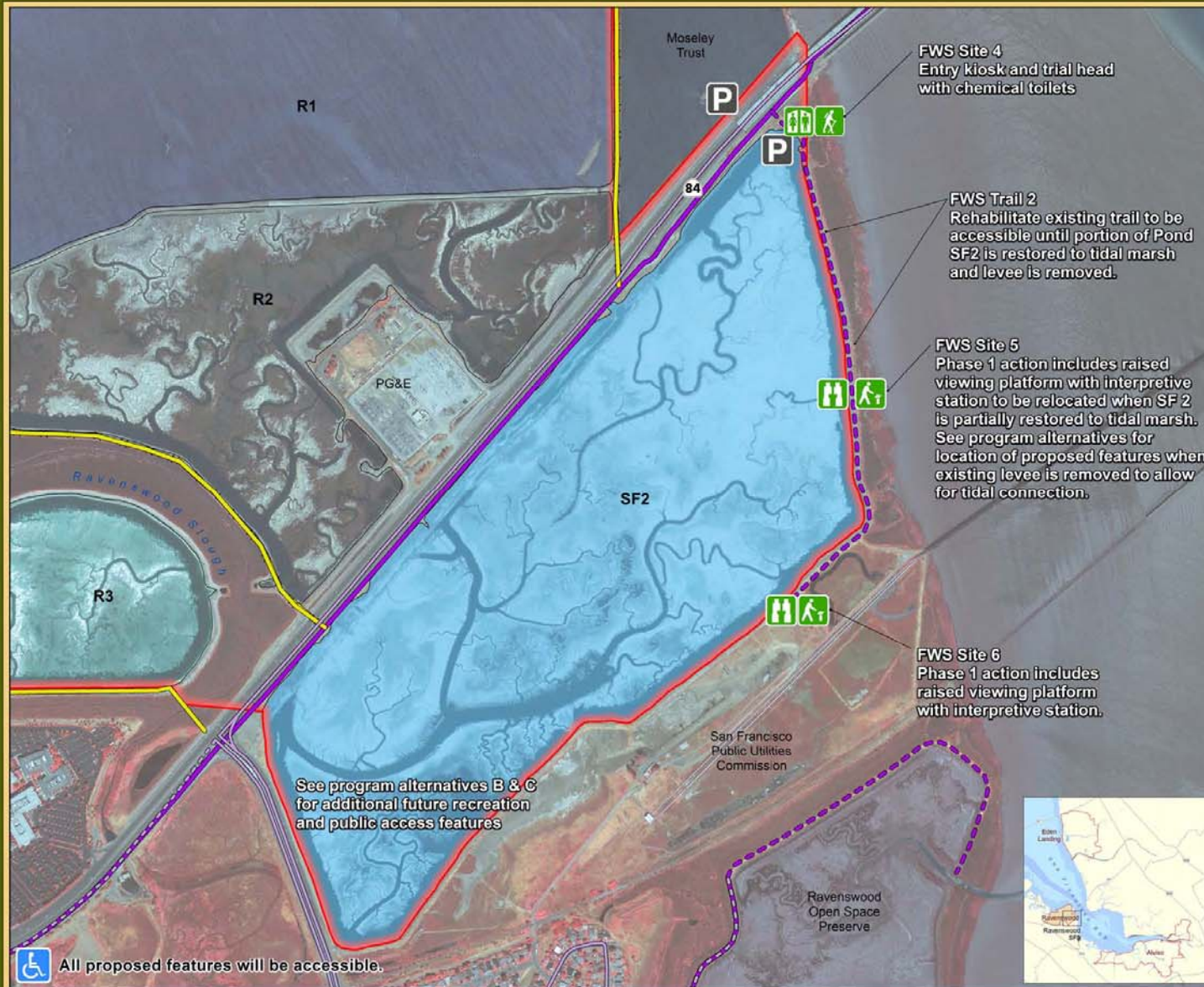


SBSP Ravenswood Working Group, January 17, 2008

South Bay Salt Pond Restoration Project

Ravenswood SF2 Phase 1 Recreation Actions



- Project Area
- Habitat Features**
 - Managed Pond
 - Tidal Habitat

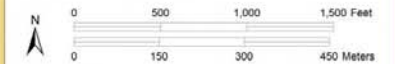
- Trail Features**
 - Existing Trail

- Existing Bay Trail**
(Association of Bay Area Governments)
 - Spine Trail
 - Spur Trail

- Bike Trails**
 - Cyclists and Pedestrians
 - Cyclist Lane or Signed Roads

- Existing Recreation Facilities**
 - Parking

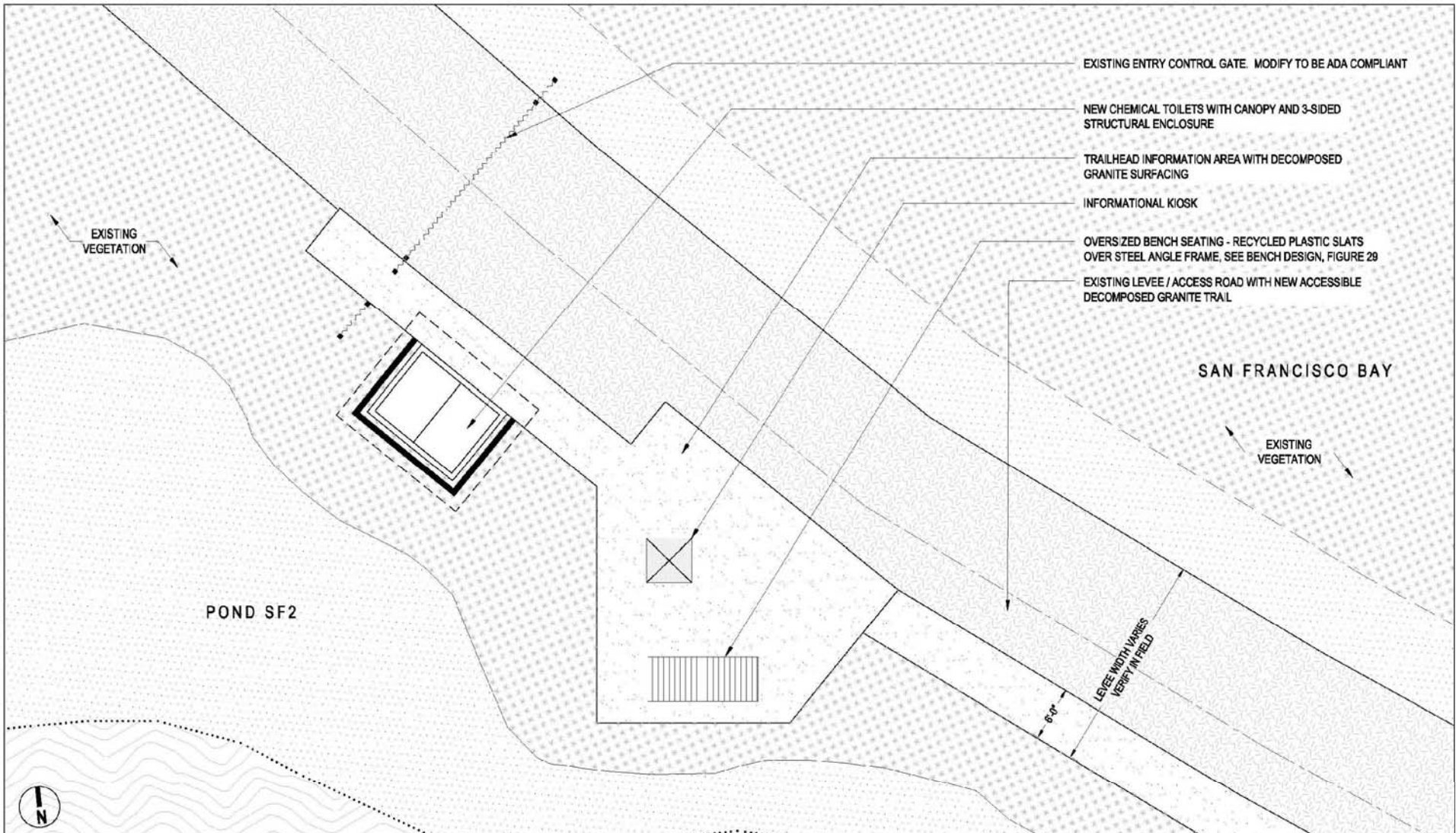
- Proposed Recreation Facilities**
 - Chemical Toilet
 - Trail Head
 - Interpretive Station
 - Viewing Platform



Map datum and projection: NAD83, UTM Zone 10N
 Map data: San Francisco Estuary Institute (habitats, bay shoreline, aqueduct);
 EDAP (project boundary); Cargill (ponds, buildings); Bay Area Open Space
 Council (highways).
 Map by: EDAP
 Map date: September 19, 2007



FWS Site 4 – Pond SF2 Trailhead



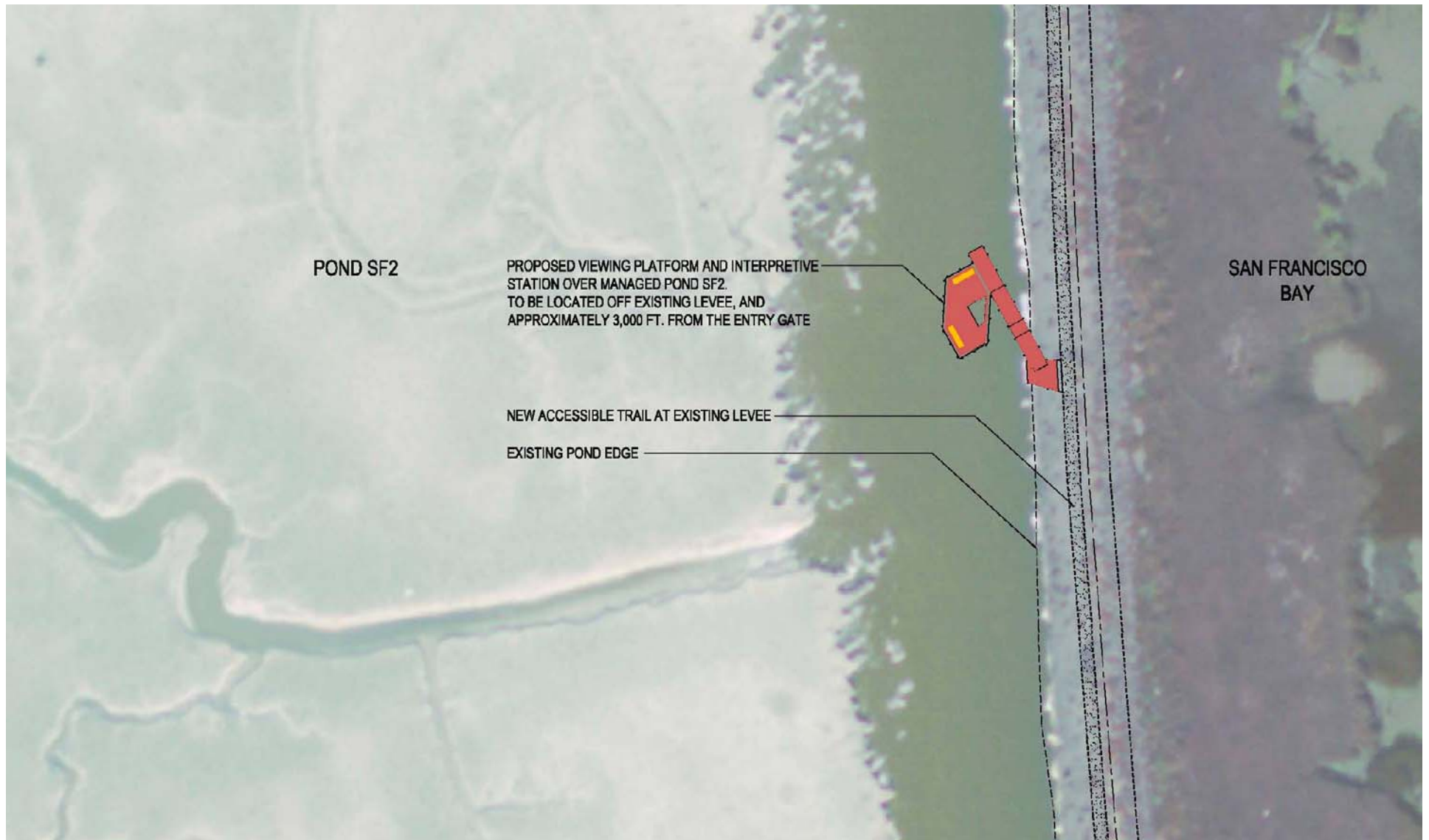
SOUTH BAY SALT POND RESTORATION PROJECT **RAVENSWOOD POND COMPLEX**

PREPARED BY: EDRAW INC. **POND SF2 TRAILHEAD**

DATE: 11.09.07 **FWS4 Layout Plan**

SCALE: 1"= 8'-0"

FIGURE 21



FWS Site 5 – Pond SF2 East Viewing Platform

NOTES:

1. Viewing platform offset from the edge of the existing levee trail may change based on a more detailed site survey. The layout of the actual connection between the platform and the existing levee trail to be refined based on site surveys and structural review.
2. Viewing platform finished floor elevation 3' above existing levee.
3. Viewing platform to be constructed with steel or timber pilings, steel framing, wood joists and recycled plastic decking. Design to be refined in consultation with project structural engineer.

STEEL BAR AND CABLE GUARDRAIL

INTERPRETIVE SIGNAGE

STEEL GRATING "WINDOW" DECKING PROVIDES VIEW TO WATER BELOW

STEEL BAR AND CABLE GUARDRAIL WITH HANDRAIL AT RAMP

TIMBER OR STEEL CURB

CONCRETE ABUTMENT

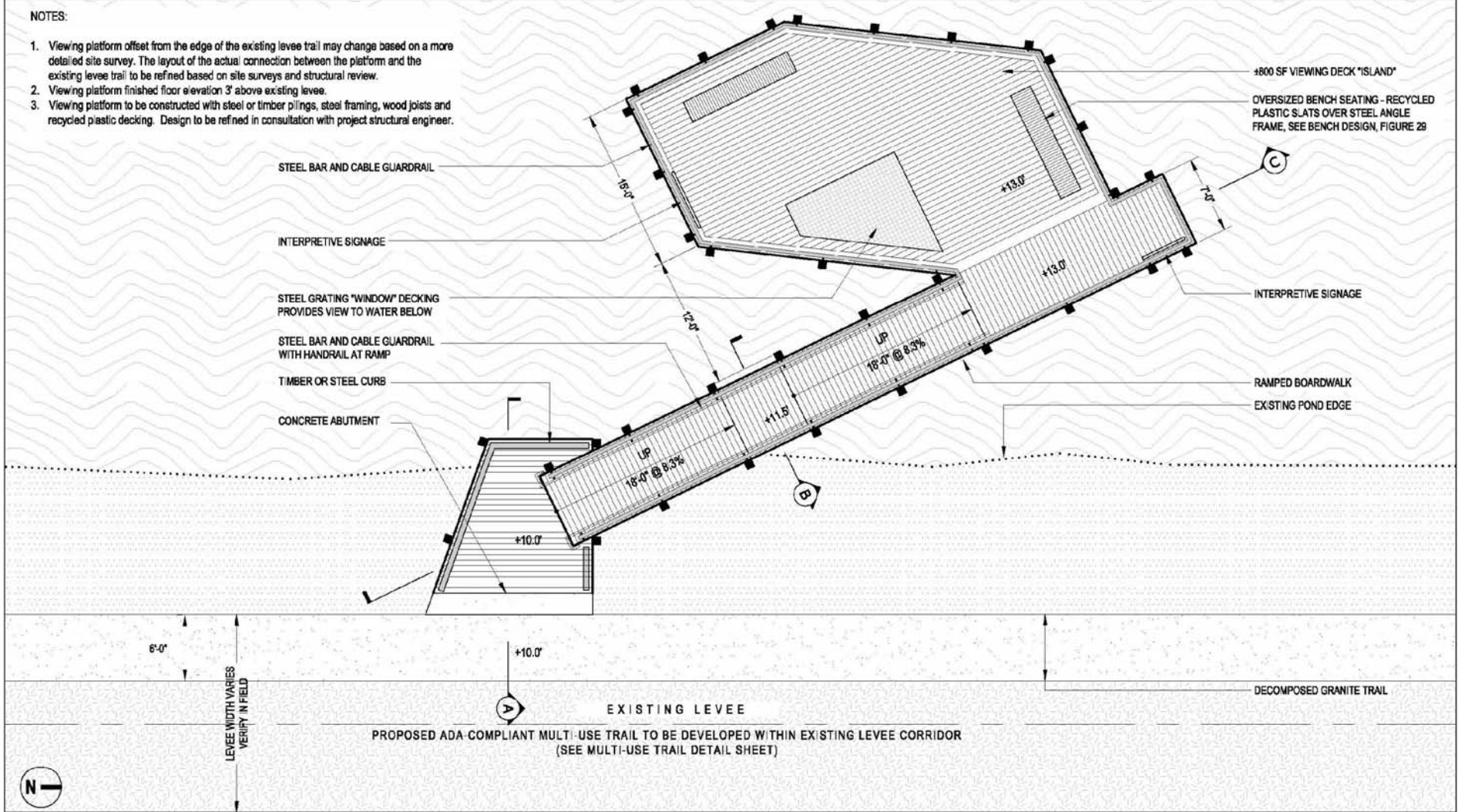
~800 SF VIEWING DECK "ISLAND"

OVERSIZED BENCH SEATING - RECYCLED PLASTIC SLATS OVER STEEL ANGLE FRAME, SEE BENCH DESIGN, FIGURE 29

INTERPRETIVE SIGNAGE

RAMPED BOARDWALK

EXISTING POND EDGE

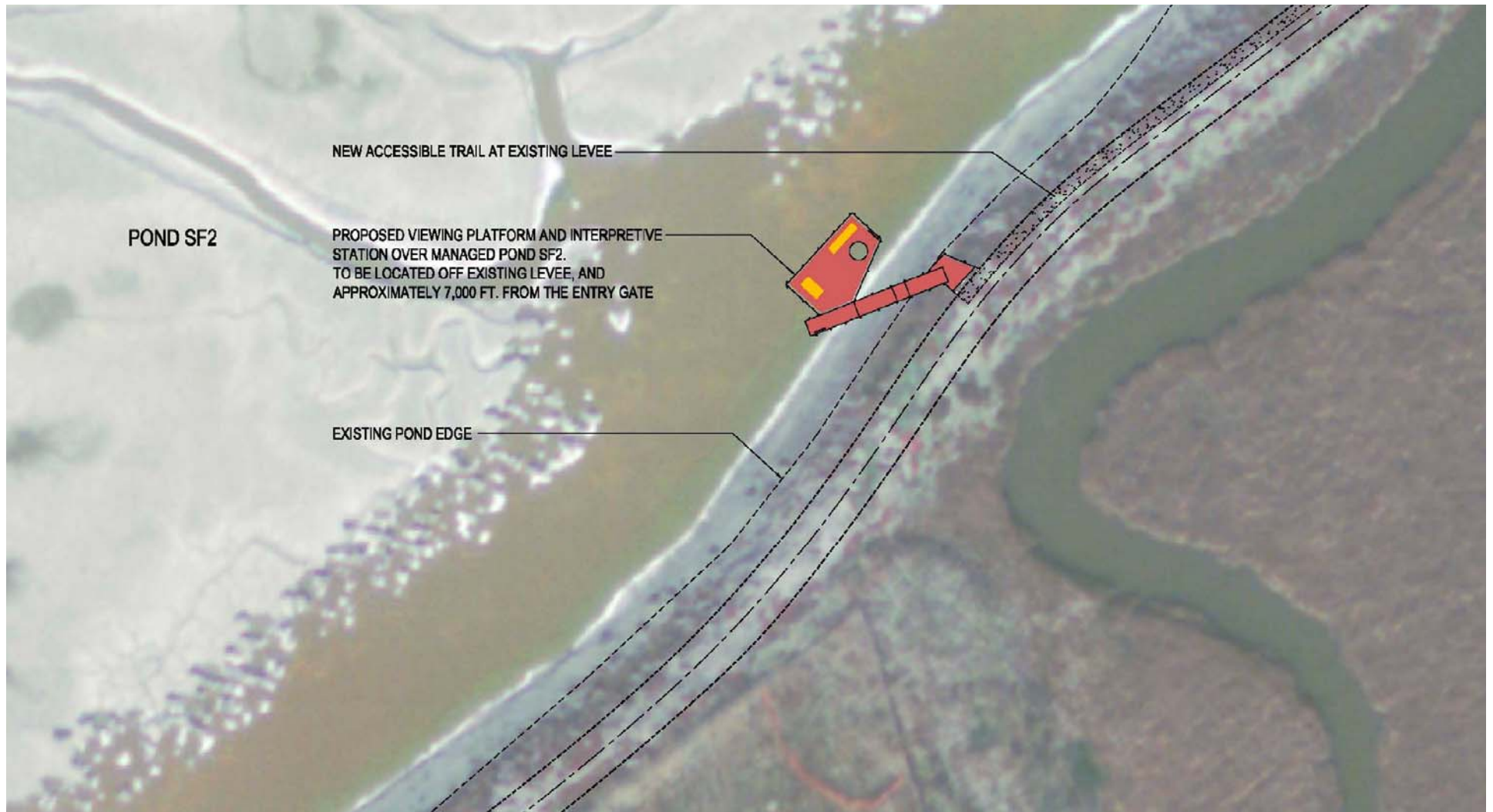


SOUTH BAY SALT POND RESTORATION PROJECT

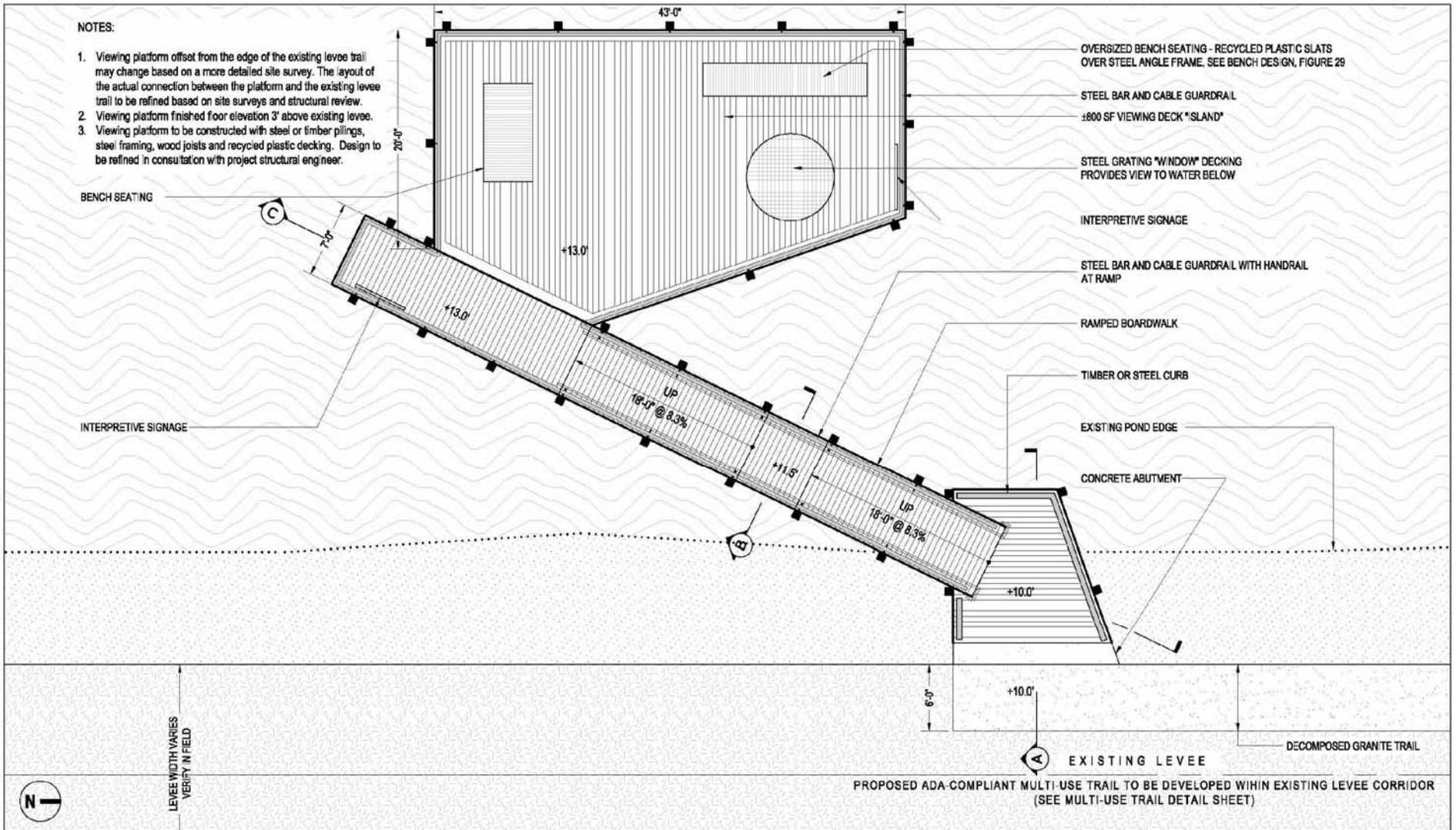
PREPARED BY: EDAAW INC.
 DATE: 11.09.07
 SCALE: 1"= 8'-0"

FIGURE 23

**RAVENSWOOD POND COMPLEX
 POND SF2 VIEWING PLATFORM EAST
 FWS5 Layout Plan**



FWS Site 6 – Pond SF2 South Viewing Platform



SOUTH BAY SALT POND RESTORATION PROJECT

PREPARED BY: EDAW INC.
 DATE: 11.09.07
 SCALE: 1"= 8'-0"

FIGURE 25

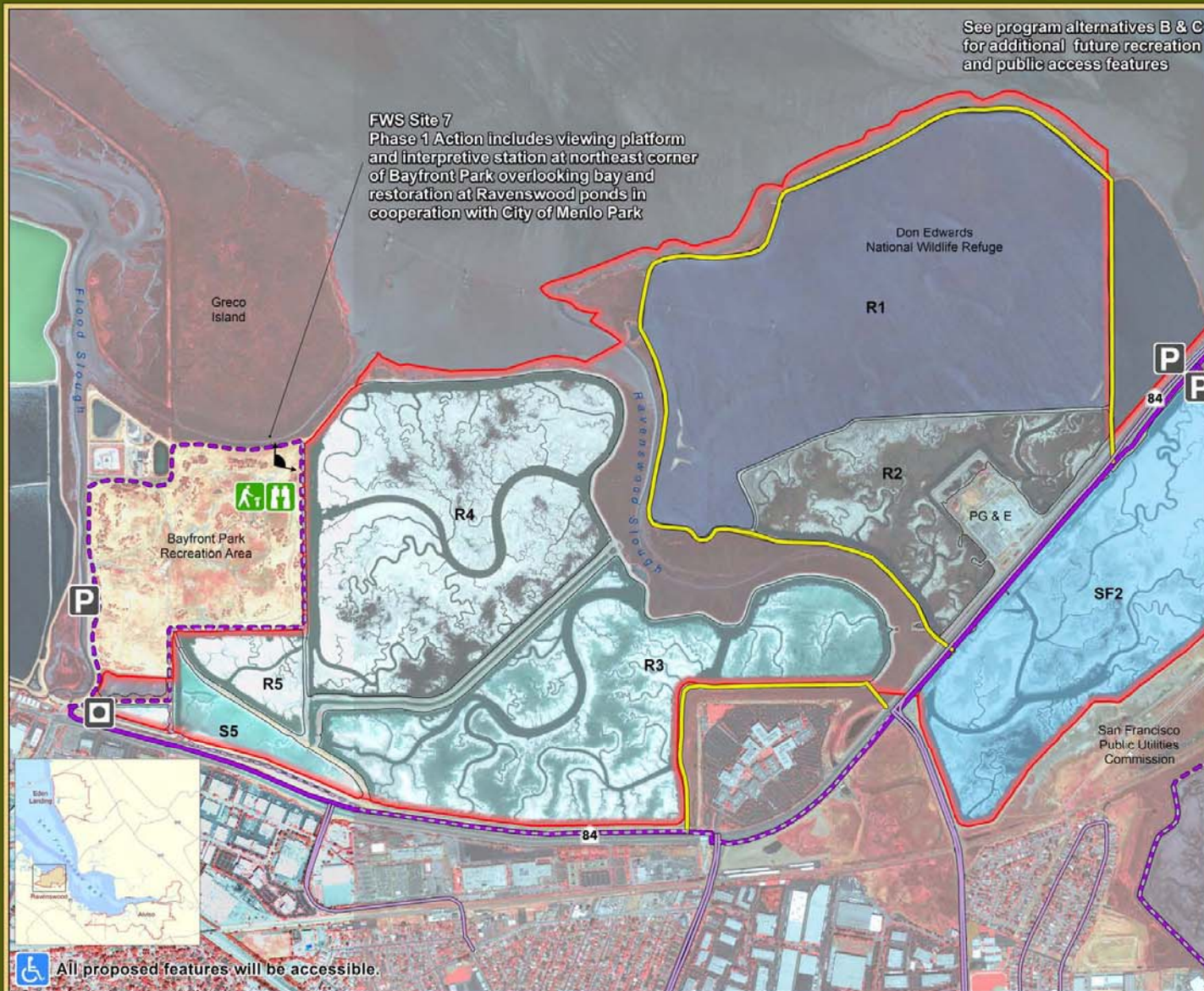
**RAVENSWOOD POND COMPLEX
 POND SF2 VIEWING PLATFORM SOUTH
 FWS6 Layout Plan**

South Bay Salt Pond Restoration Project

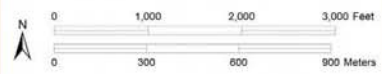
Ravenswood Bayfront Park Phase 1 Actions

See program alternatives B & C for additional future recreation and public access features

FWS Site 7
Phase 1 Action includes viewing platform and interpretive station at northeast corner of Bayfront Park overlooking bay and restoration at Ravenswood ponds in cooperation with City of Menlo Park

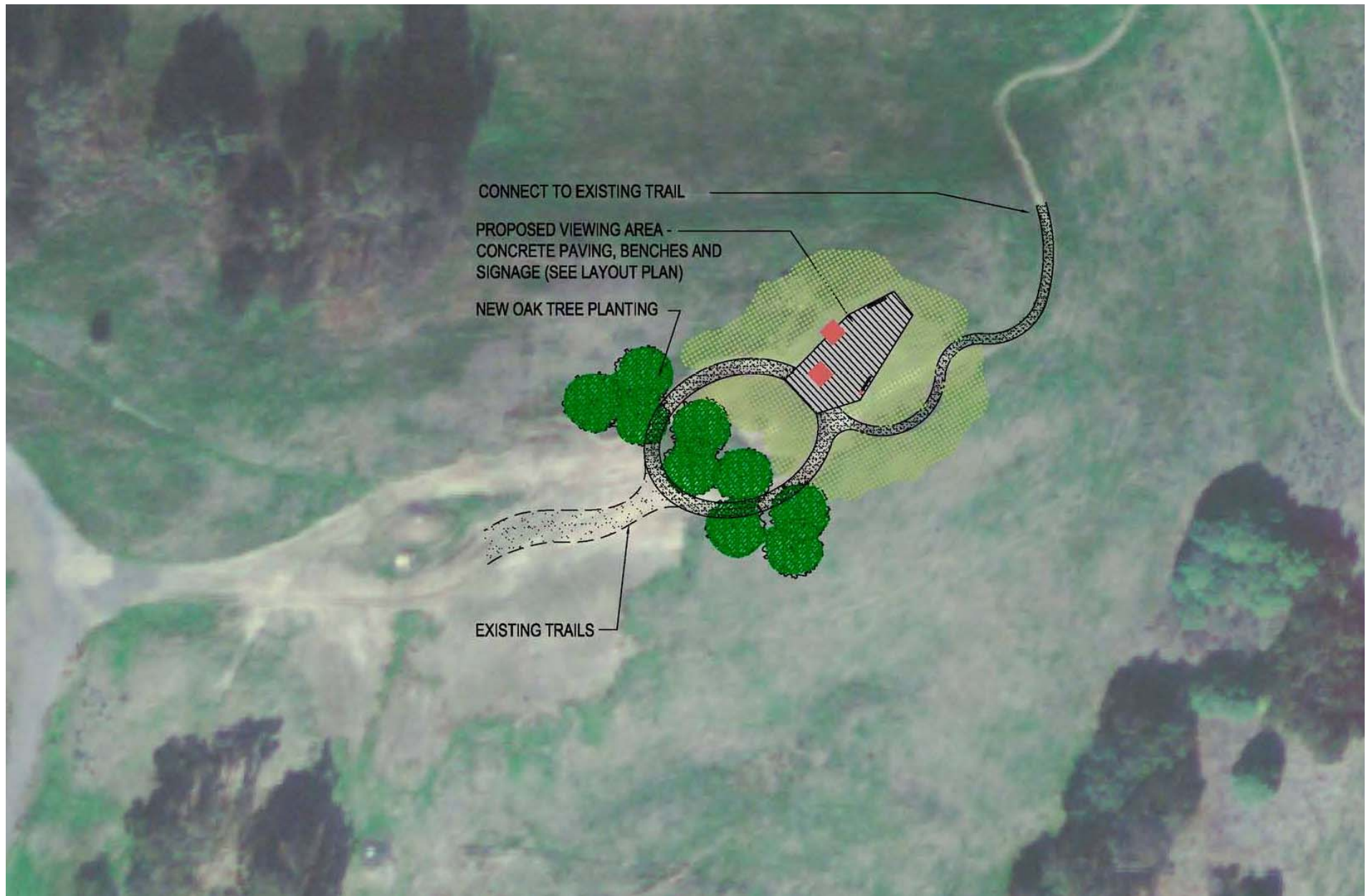


- Project Area
- Habitat Features**
 - Managed Pond
 - Tidal Habitat
- Trail Features**
 - Existing Trail
 - Proposed Year-Round Trail
- Existing Bay Trail**
(Association of Bay Area Governments)
 - Spine Trail
 - Spur Trail
- Bike Trails**
(Valley Transportation Authority & MTC)
 - Cyclists and Pedestrians
 - Cyclist Lane or Signed Roads
- Existing Recreation Facilities**
 - Parking
 - Historic Feature
- Proposed Recreation Facilities**
 - Interpretive Station
 - Viewing Platform
 - Viewpoint



WORKING DRAFT

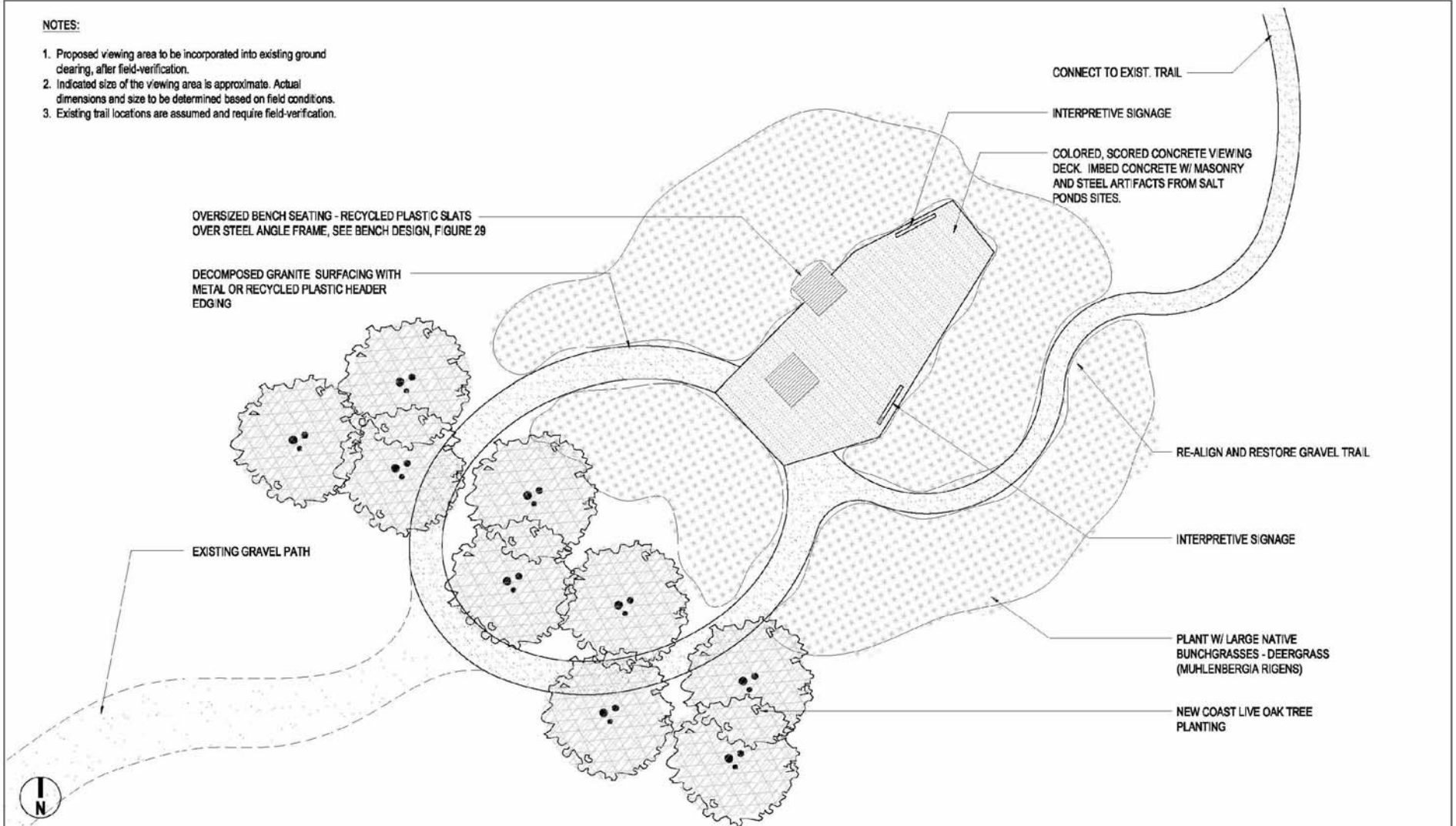
Map datum and projection: NAD83, UTM Zone 10N
 Map data: San Francisco Estuary Institute (habitats, bay shoreline, aqueduct);
 EDAW (project boundary), Cargill (ponds, buildings); Bay Area Open Space
 Council (highways).
 Map by: EDAW
 Map date: September 19, 2007



FWS Site 7 – Bayfront Park Viewing Area

NOTES:

1. Proposed viewing area to be incorporated into existing ground clearing, after field-verification.
2. Indicated size of the viewing area is approximate. Actual dimensions and size to be determined based on field conditions.
3. Existing trail locations are assumed and require field-verification.



SOUTH BAY SALT POND RESTORATION PROJECT

PREPARED BY: EDAW INC.
DATE: 11.09.07
SCALE: 1"= 16'-0"

FIGURE 27

RAVENSWOOD POND COMPLEX

BAYFRONT PARK VIEWING AREA

FWS7 Layout Plan